

Speedy 100 Laser Systems



Quality and performance
with a unique concept designed
to grow with your business!

Worldwide Leading Laser Engraving Technology

trotec[®]
laser engraving technology

This is a real breakthrough!



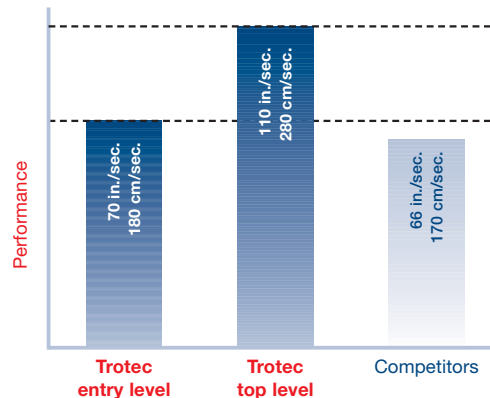
Benefit from higher productivity

- Higher output
- Higher processing speed

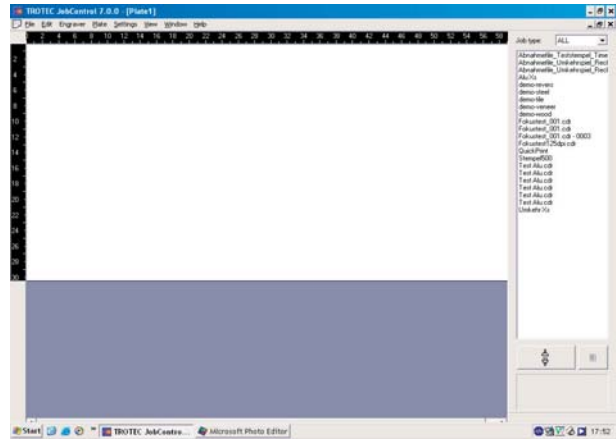
Good value for money, efficient and the very best available on the market. The **Speedy 100** is the world's finest laser that grows as your business grows.

What does Performance mean?

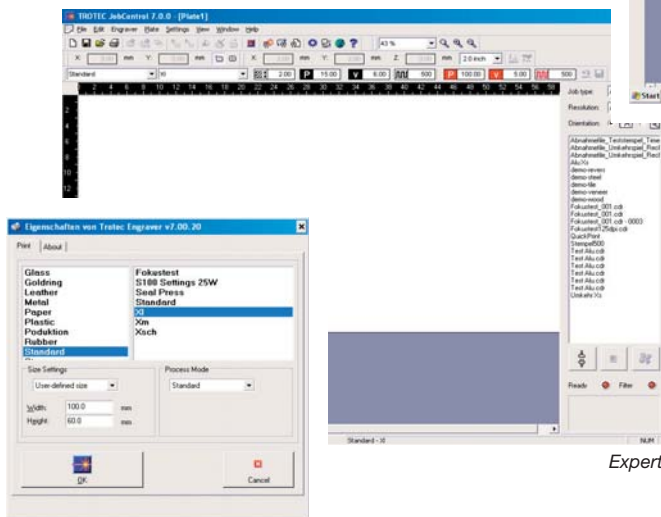
Speedy 100 is the fastest laser—there is NOTHING faster in its class. The speed of the entry level unit can be optionally advanced through an upgrade at any stage. And the extraordinary quality in terms of engraving and cutting will continue to remain on the same top level.



Fully Upgradeable Software: From **BASIC** to **EXPERT**



Advanced



Expert

Basic

The **Speedy 100** is the only laser that is fully upgradeable through three different levels of Software. You can start working with the Speedy 100 at no time due to the easy-to-use software and upgrade to the "Expert"-level at any time.

- BASIC** The Software Package for Beginners
- ADVANCED** The Software Package for Enhanced Output
- EXPERT** For Maximum Productivity

Trotec has set new standards for laser control software. Our engineers designed our **JobControl software** for your actual and future needs. Ask for the following features whenever looking for a laser system:

- Various process modes: standard, stamp, relief, layer
- Marker for precise positioning
- Parameter change on the fly
- Nesting function for maximum material utilization
- Jobqueue
- Change of engraving direction (x or y direction)
- Guidelines
- Customized views
- Stepless adjustment of rubber stamp flanks
- Link function for automatically perforated cutting lines
- "Quick Print"
- Multiple positioning of jobs
- Repeat function at one push of a button
- Monitoring of exhaust functions (on/off, filter status)
- Job History for calculation of final costings

You can witness the capability of our **JobControl software** by just asking for a demonstration.

Features & Accessories



| | |
|------------------------------|----------------------------|
| Working Range (X/Y/Z) | 610x305x170 mm |
| Laser Power Range | 12, 25, 30, 45 Watt |
| Engraving Speed | 180 cm/sec. 70 in./sec. |
| JobControl | Basic |

Available Features & Accessories

Laser pointer, ferromagnetic working table, interchangeable exhaust connector, Autofocus, Rotary Attachment, Honeycomb Cutting Table, Air Assist, Trolley with storage shelf, Driver for Windows™ XP, extended warranty.

Performance Upgrade

standard 70 inch (180 cm/sec.),
upgrade to 110 inch (280 cm/sec.)

Software Upgrade

Advanced, Expert—offer enhanced functions like Marker, Repeat Cutting Line and many more



www.troteclaser.com

Linzer Str. 156
A-4600 Wels
Tel. +43 / 72 42 / 239-0
Fax +43 / 72 42 / 239-7380
trotec@trotec.net
www.troteclaser.com

trotec[®]
laser engraving technology